





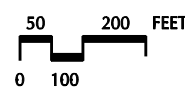
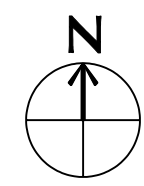


# LEGEND

-  ACCESSIBLE BUILDING ENTRY
-  CAMPUS MAP & INFORMATION CENTER
-  GENERAL PARKING AREA  
(Unless otherwise noted on local signs)
-  HANDICAPPED ACCESSIBLE PARKING
-  BLUE SECURITY PHONE
-  CAMPUS ENTRY POINT



- 1) STUDENT DEVELOPMENT
- 2) HONORS PRGM COUNSELING CNTR



# JOHN CARROLL UNIVERSITY CAMPUS ACCESSIBILITY MAP