

*Derive*<sup>TM</sup> 6 is one of a class of computer programs known as “computer algebra systems” or CAS. The power of a CAS is the ability to do algebraic symbol manipulation, as opposed to straight numerical computation. We will be using *Derive*<sup>TM</sup> 6 to investigate calculus concepts and as a problem-solving tool. The purpose of this worksheet is to help you run the program from the labs on campus.

### Getting Started:

You can run *Derive* 6 from any of the computer labs on campus.<sup>1</sup> After logging onto a computer, access the “Start” menu and choose JCU Programs ... Arts&Sciences ... *Derive* 6.

### Default Settings:

You should always run *Derive* using the default settings. With luck, you will see the dialog box shown in Figure 1 when you start *Derive*.

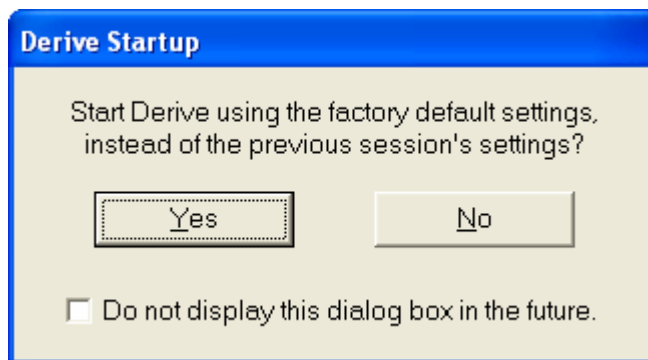


Figure 1: “Derive Startup” Dialog Box

Click “Yes,” and *never, never, never* check the “Do not display” box.

If you don’t see the “Startup” dialog box, go to the Options menu at the top of the screen. Select “Startup,” and then check the “Prompt to use factory default settings” box in the “Startup Options” dialog box. (See Figure 2.) Then click “OK” and close *Derive*. Now run *Derive* again from the “Start” menu on the computer. You should now be prompted to use the factory default settings. Remember: *never, never, never* check the “Do not display” box.

---

<sup>1</sup> Occasionally there will be a computer or an entire lab in which *Derive* conflicts with another piece of software. You’ll be able to tell if this is the case, because your *Derive* output will be “strange.” If this happens to you, you should move to another computer or another lab, and let your teacher know where you were when you encountered the problem.

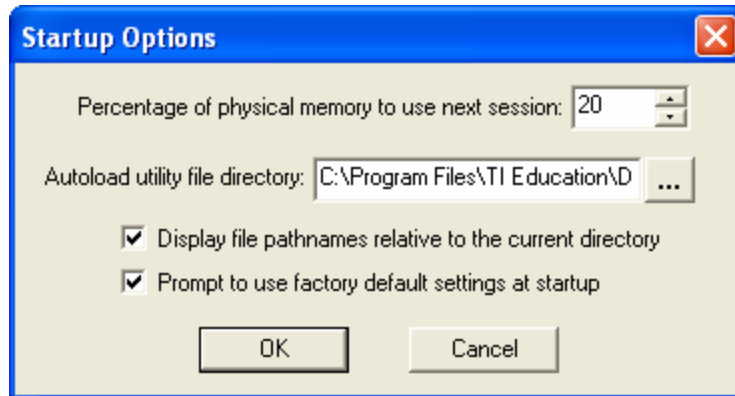



Figure 2: "Startup Options" Dialog Box

### **Closing Derive:**

When you close Derive, either by clicking on the  button or by selecting "Exit" from the File menu, you will be asked whether you want to save "Algebra 1." Choose "Yes" if you want to return to the document at a later date. Give the document a name and save it to a disk or to your directory on the campus network. You can open the document in a future Derive session by choosing "Open" from the File menu. Of course, if you don't want to save the document, just choose "No."

**Keep this handout in an accessible place for future reference!**